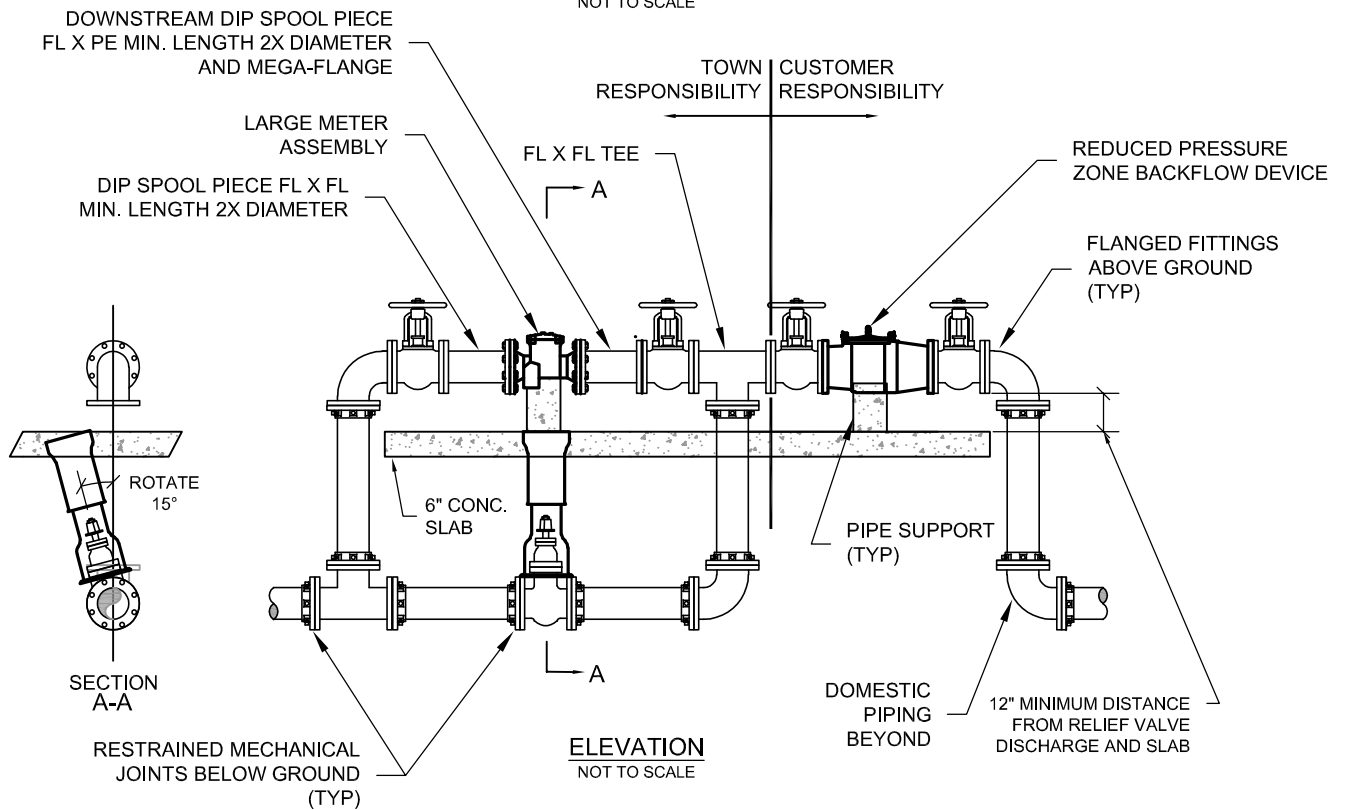


**PLAN VIEW**  
NOT TO SCALE



**ELEVATION**  
NOT TO SCALE

**NOTES:**

1. REFER TO PAGE 31 OF THE TOWN OF JUPITER UTILITIES GUIDE FOR DEVELOPMENT, DESIGN AND CONSTRUCTION STANDARDS, WATER AND STORMWATER.
2. CONCRETE SLAB LENGTH SHALL BE FROM OUTSIDE FACE OF VALVE FLANGE BEFORE FLOW METER AND AFTER BACKFLOW DEVICE.
3. ALL ABOVE GRADE PIPING SHALL BE PAINTED WITH SHERWIN WILLIAMS INDUSTRIAL ENAMEL COLOR PERENNIAL GREEN
4. FLOW METERS SHALL BE MASTER METER.
5. ALL MATERIAL SHALL BE APPROVED BY THE TOWN OF JUPITER WATER UTILITIES PRIOR TO INSTALLATION.
6. ALL PIPING SHALL BE RESTRAINED PER TOWN OF JUPITER WATER UTILITIES STANDARDS.
7. PIPE AND METER SIZES SHALL BE DETERMINED BY ENGINEER OF RECORD AND FIRE MARSHAL.
8. ALL PIPING SHALL MATCH SIZE OF THE LARGE METER ASSEMBLY EXCEPT FOR 3" LARGE METER ASSEMBLIES WHICH SHALL HAVE 4" PIPING.
9. THE BACKFLOW PREVENTION DEVICE SHALL BE CERTIFIED BY THE UNIVERSITY OF SOUTHERN CALIFORNIA HYDRAULIC RESEARCH.

**DOMESTIC METER ASSEMBLY (3" - 12")**