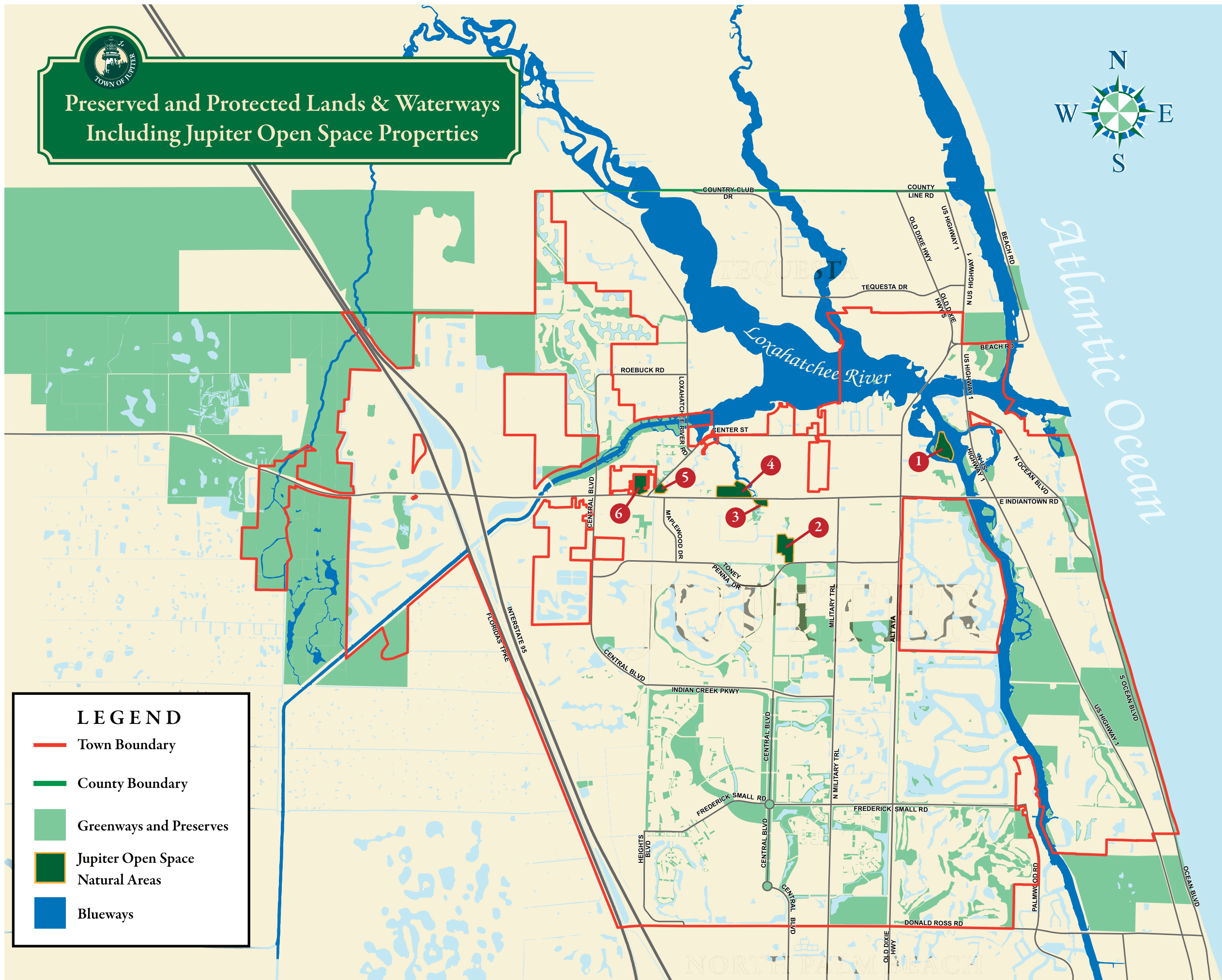
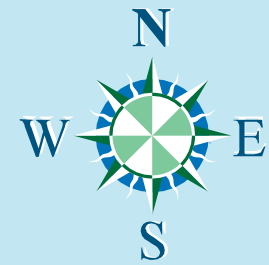




# Preserved and Protected Lands & Waterways Including Jupiter Open Space Properties



### LEGEND

- Town Boundary
- County Boundary
- Greenways and Preserves
- Jupiter Open Space Natural Areas
- Blueways

- 1 FULLERTON ISLAND**  
 Jupiter Open Space Bond Purchase: June, 2008  
**Location:** The Intracoastal island west of Burt Reynolds Park  
**Size:** 12 Acres
- 2 JONES CREEK HAMMOCK**  
 Acquired by the Town in 1987 as part of a land transfer and added to the Jupiter Open Space Program's list of natural preserves in 2006  
**Location:** Next to the North County Aquatic Center on Pennock Lane  
**Size:** 20 acres
- 3 JONES CREEK PRESERVE**  
 Jupiter Open Space Bond Purchase: July, 2005  
**Location:** On Jones Creek, south side of Indiantown Road, immediately south of Delaware Scrub  
**Size:** 1.36 Acres
- 4 DELAWARE SCRUB**  
 Jupiter Open Space Bond Purchase: May, 2005  
**Location:** North side of Indiantown Road between Jones Creek and North Delaware Blvd.  
**Size:** 15.88 Acres
- 5 SIMS CREEK PRESERVE**  
 Jupiter Open Space Bond Purchase: Nov., 2005  
**Location:** Sims Creek Preserve is on the east side of Center Street just before its intersection with Indiantown Rd.; the property's eastern and southern boundary is Sims Creek  
**Size:** 2.82 Acres
- 6 OPEN SPACE AT CENTRAL BLVD AND INDIANTOWN ROAD**  
 Jupiter Open Space Bond Purchase: Sept., 2008  
**Location:** On Indiantown Road at the northwest corner of its intersection with Center Street  
**Size:** 10 Acres